




CATAMARCA MINING



Ministerio de Minería
Catamarca Gobierno

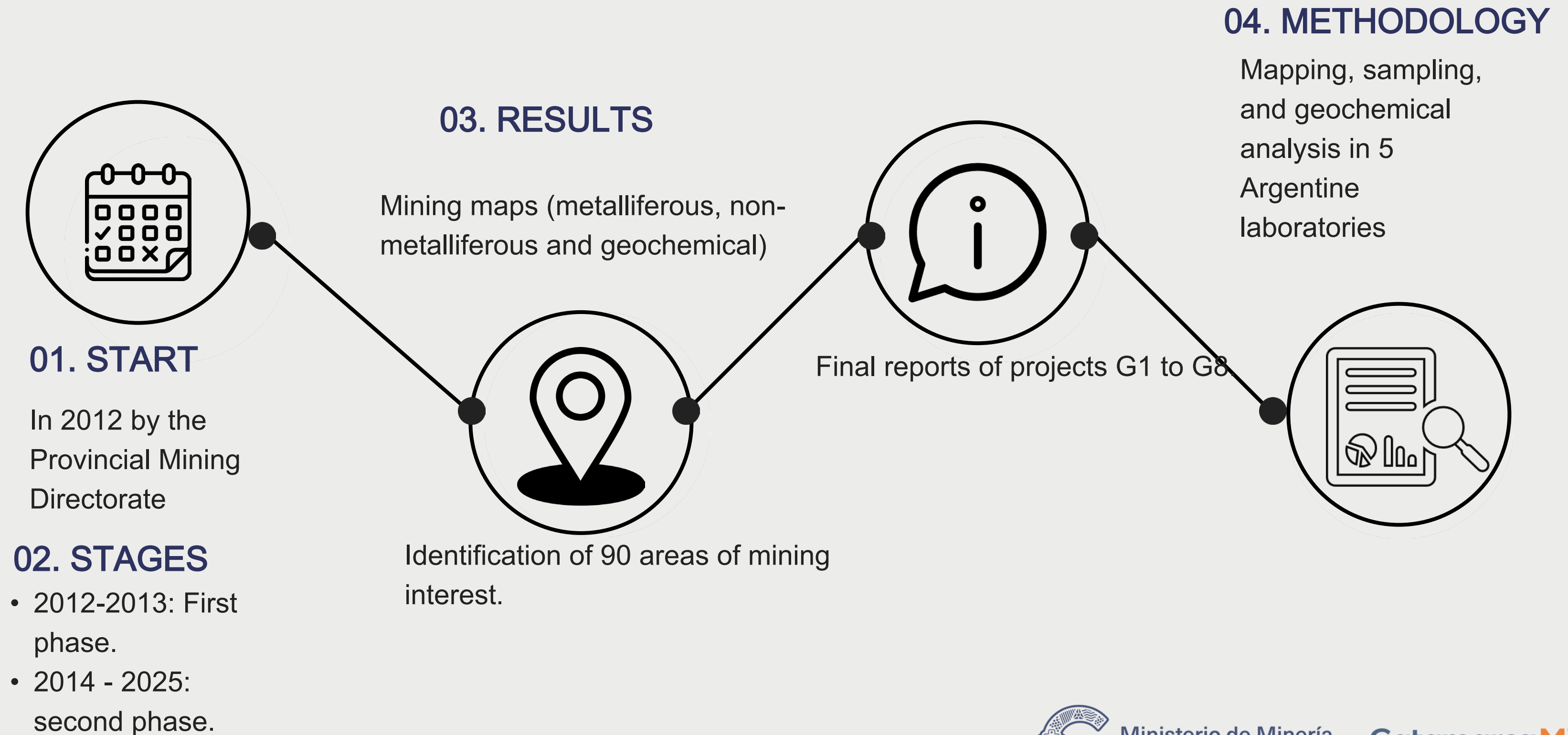
CatamarcaMinera[®]

CATAMARCA

- 
- Catamarca is one of the 23 provinces that make up the Argentine Republic. It is located in the northwestern region.
 - Argentina is a federal country. According to the National Constitution article 124: "the natural resources existing in its territory are under provincial domain.
 - Management of natural resources: it encompasses legally, granting permits, as well as the power of police to control and oversee mining activities from an environmental standpoint.
 - Regulations governing mining activities: these include the Mining Code, Mining Procedure Code, as well as national and provincial laws and ministerial resolutions.



RESEARCH PROGRAM: NEW MINING PROJECTS



GEOLOGICAL-MINING PROSPECTING AREAS

01. METAL MINERALS



Ministerio de Minería
Catamarca Gobierno

CatamarcaMinera®

ÁREAS DE PROSPECCIÓN GEOLÓGICO-MINERA
MAPA MINERALES METALÍFERO



Projects: gold, silver and base metals

(Cu, Fe, Al, Zn)

Sampling

- 178 gold-silver rocks and sediments
- 226 base metal deposits

Methodologies

Background+ new points of geochemical interest

Areas suitable for exploration

- Filo de Las Vicuñas (Au-Ag).
- City-Tramontana (Zn-Pb).
- Vernancua (Cu-Au-Ag).
- Co. Peinado (Cu-Au-Ag).
- Co. Toronado (Cu-Mo).
- La Galena – Alto de Los Venados (Zn-Pb-Ag).

Areas of additional interest

Quebrada Seca, Chango Real, Altohuasi, Co. Pabellón, Piedra Pintada, La Ojota.

EXPLORATION PRIORITIES

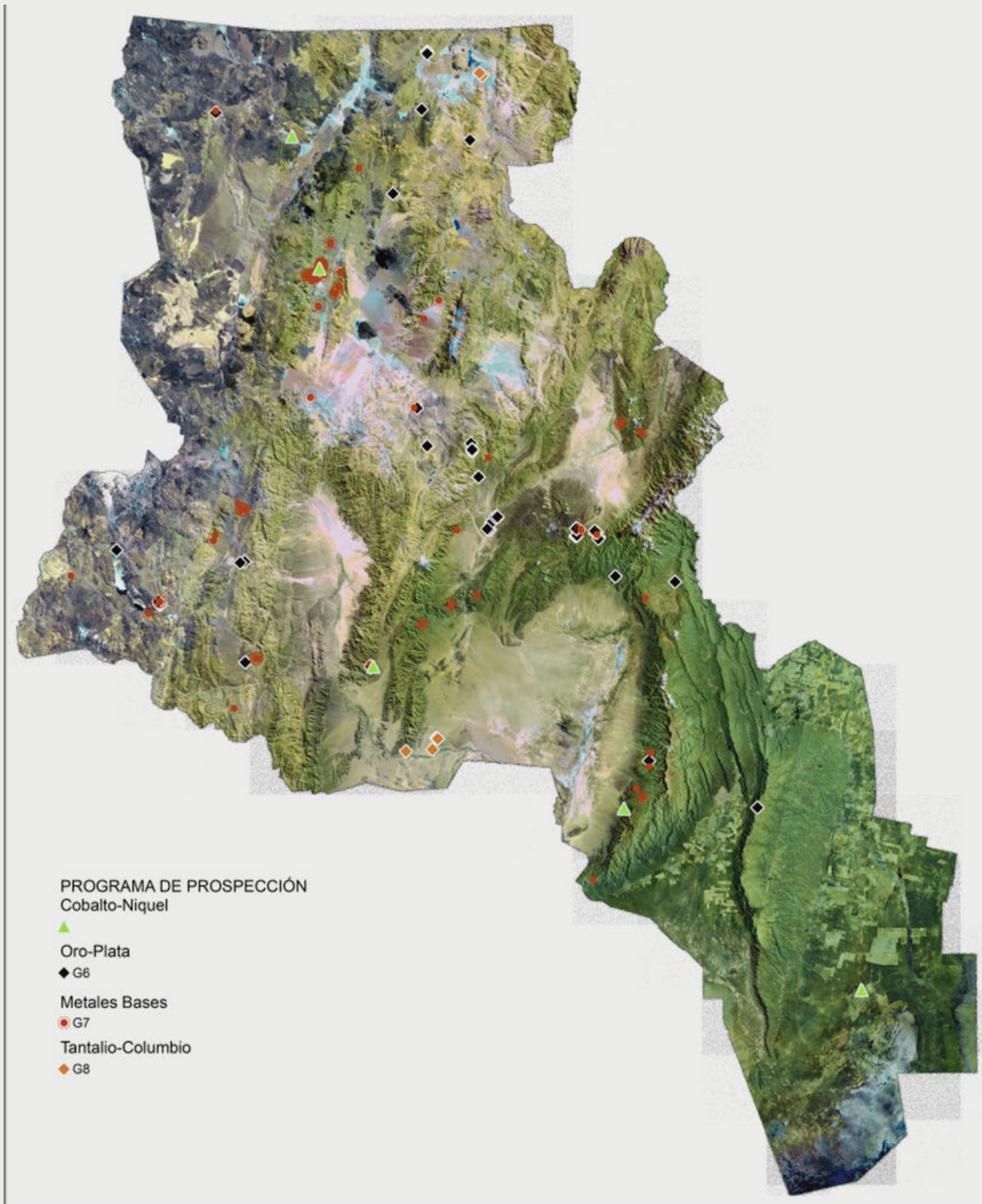
DEMONSTRATIONS:

- GOLD
- SILVER
- BASE METALS

PRIORIDADES DE EXPLORACIÓN - MANIFESTACIONES DE ORO-PLATA Y METALES BASE



Project: Tantalum and Columbium



➤ **Sampling** throughout the province

➤ **Paragenetic Association** Co-Ta-Sn-W

➤ **Areas of interest**

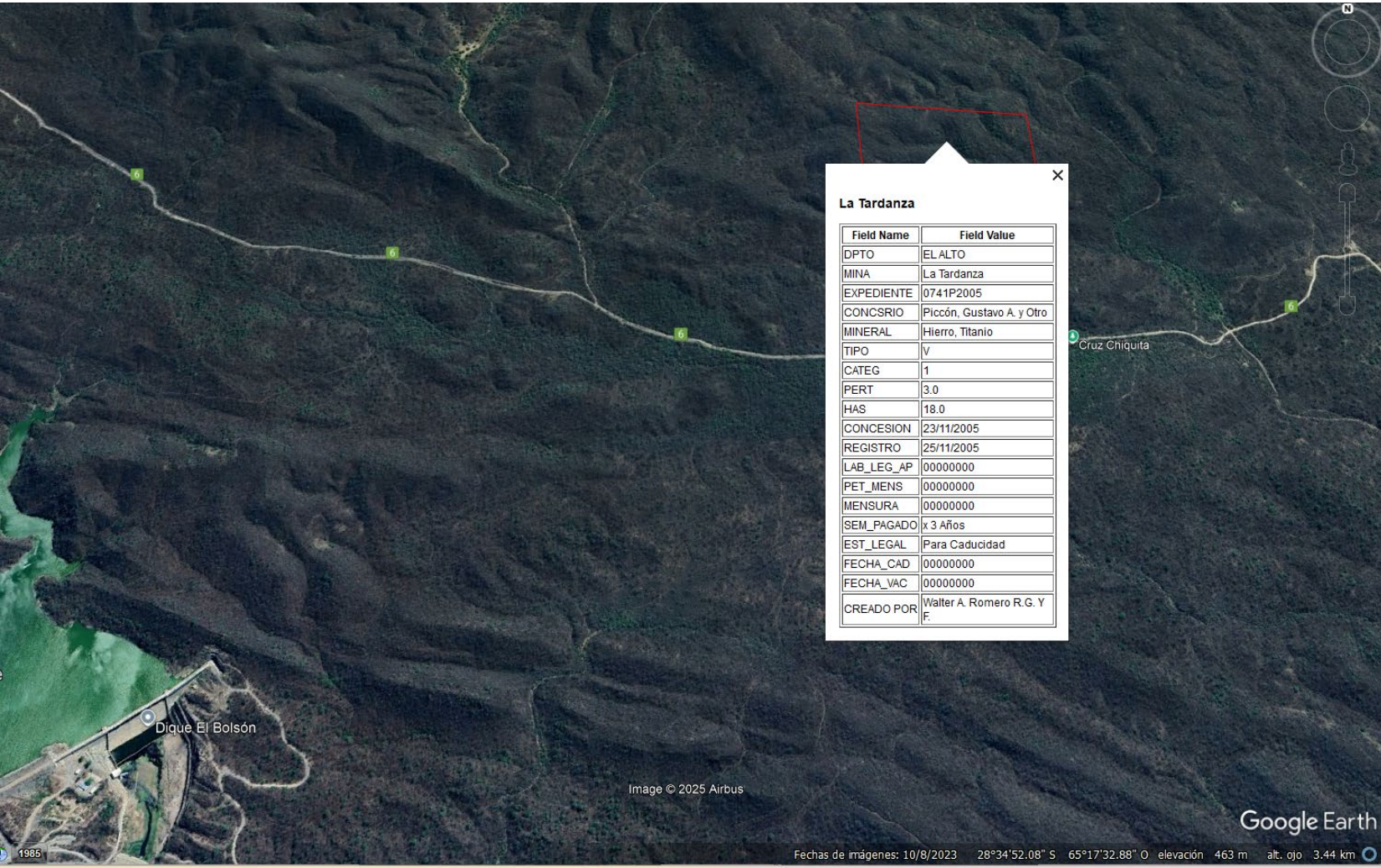
- San Antonio Mine
- Fel Pluto Achay
- Cerro Negro
- Cerro Colorado
- Viquis Sur
- Fiambalá Pluto
- Zapata Norte
- Papachacra (La Aragonesa Mine)

Cobalt and nickel

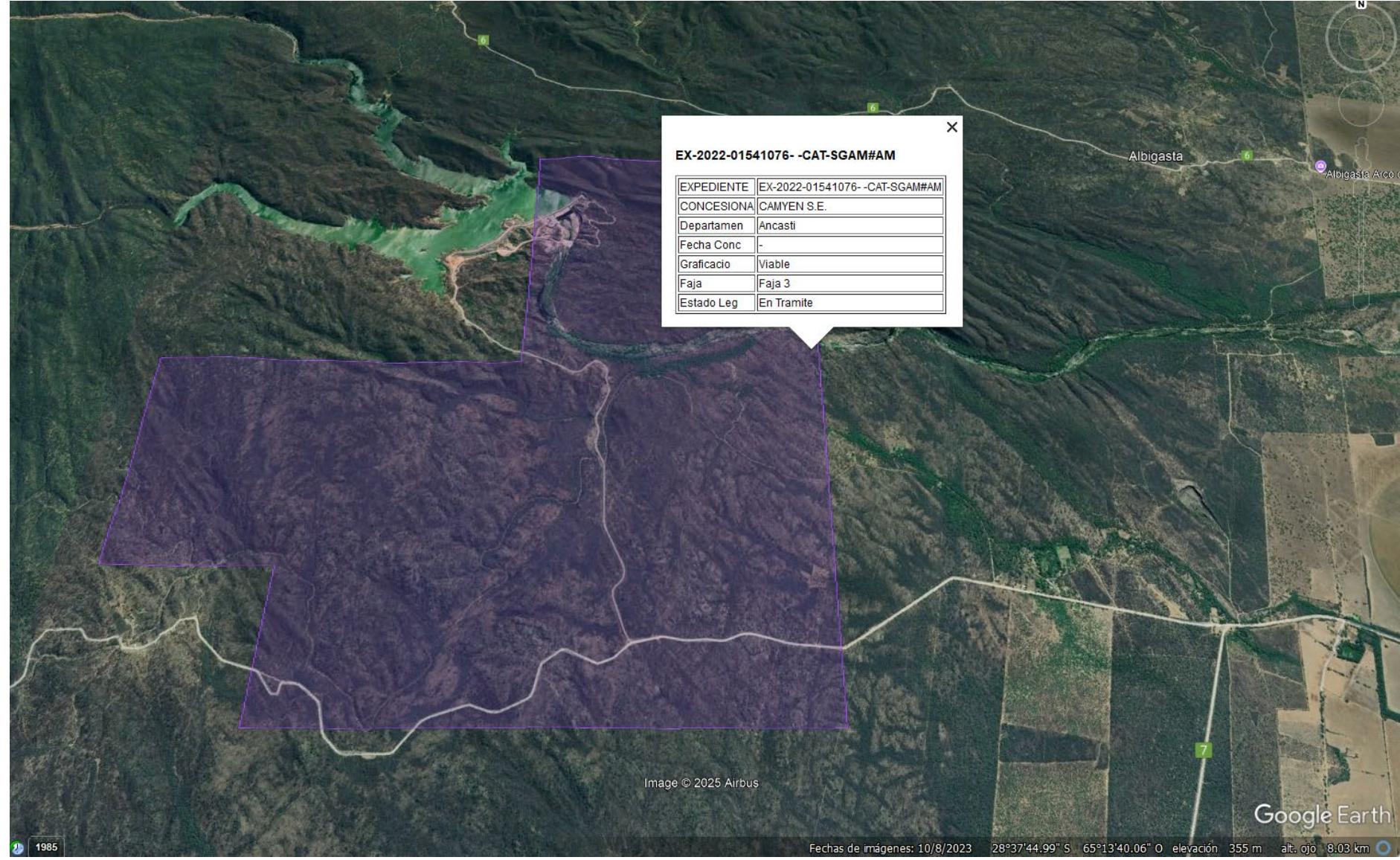
➤ **Areas of interest**

Angosto del Volcán, Oire-Tramontana, Estancia Cerrillos, Fiambalá, Quebrada La Florida, Cerro Cascabel, Cerro Rico.

Project: Iron (Dpto. El Alto , Ancasti)

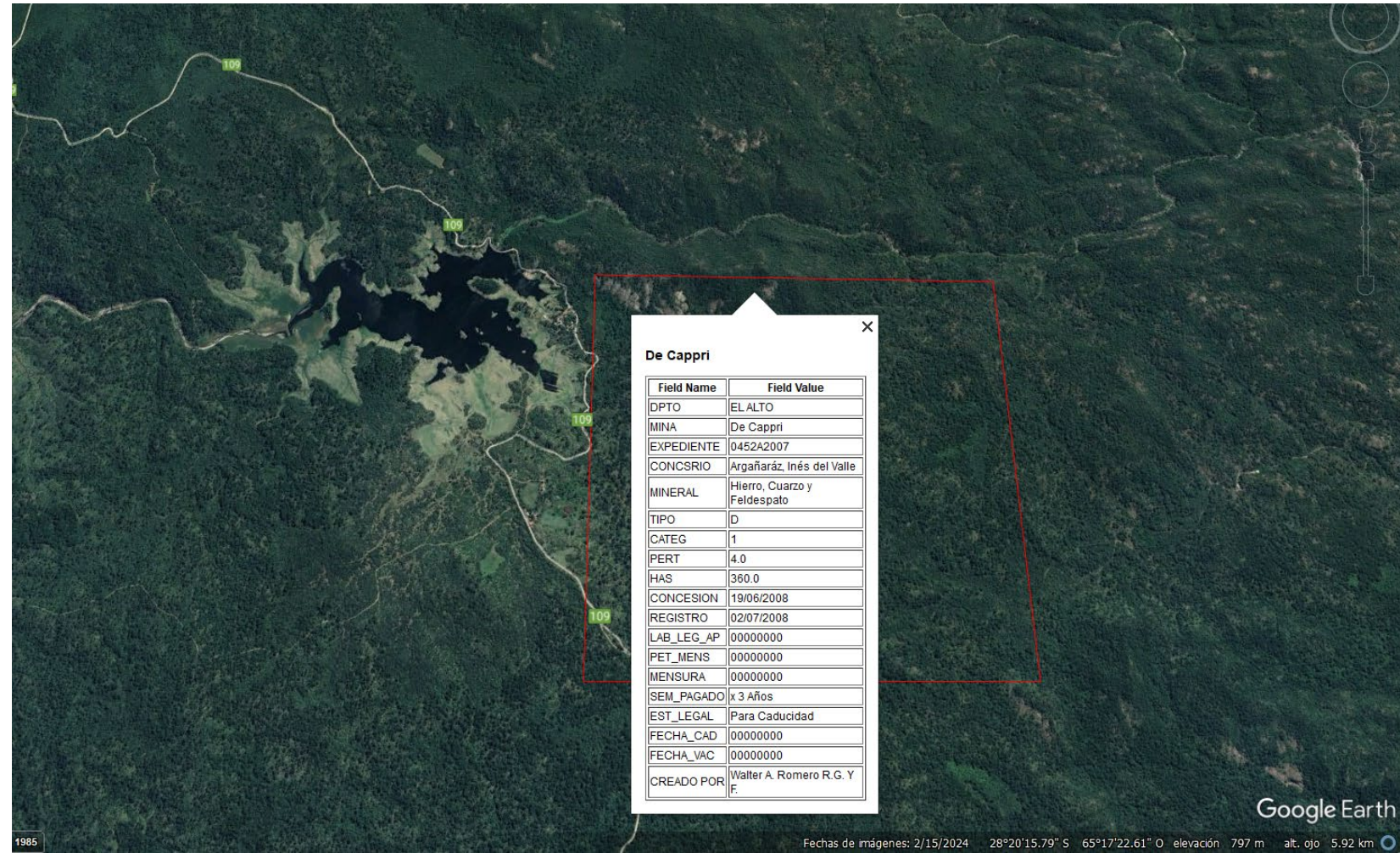


➤ **Mina La Tardanza** Concessionaire: Piccon Gustavo Adolfo y Mazzucco Patricio Eduardo



➤ **Mina De Capri**
Concessionaire
Argañaraz Ines del Valle

➤ **cateo EX-2022-0151076- -CAT-SGAM#AM** Concessionaire : CAMYEN S.E.



GEOLOGICAL-MINING PROSPECTING AREAS

02. NON-METALLIFEROUS MINERALS



Ministerio de Minería
Catamarca Gobierno

CatamarcaMinera®

Project: Pozzolana Deposits

ÁREAS DE PROSPECCIÓN GEOLÓGICO-MINERO
MAPA NO METALÍFERO



PROGRAMA DE PROSPECCIÓN
Depósitos Puzolánicos
● G1
Calizas
● G2
Depositos de Carbonatos Sódicos-Litio
◆ G3-G4

6. Districts of Interest Identified

17. Samples

analyzed had a puzzolaneity index $> 80\%$

Los Pomales Field

Bolsón de Fiambalá, depto. Tinogasta

- Puzolaneity Rate: 90-100%
- Highlighted as the main mining prospect
- Currently a quarry in production: El Barrial



Ministerio de Minería
Catamarca Gobierno

CatamarcaMinera®

LIMESTONE MANIFESTATIONS CHEMICAL GRADE LIMESTONES

- 71 samples taken throughout the province
- Chemical grade limestone with up to 98% CaCO_3
- Featured areas for mining and cement industry feedstock:
 - **Cerrillos– Buey Muerto** (near the Agua Rica-MARA Project)
 - **Cerro Aguas Calientes** (near Fénix, Sal de Vida, Sal de Oro, Candelas projects)
 - **Eastern Region** areas with encouraging results for local cement companies

SODIUM-LITHIUM CARBONATE DEPOSITS

- 23 basins surveyed throughout the province
- 79 brine and saline crust samples
- Priority areas of interest:
 - Laguna Verde Salt Flats – Tres Quebradas Project (under construction)
 - Salar de Incahuasi
 - Salar de San Francisco – San Jorge Mine (exploration)
 - Salar de Cazadero Grande – Chaschuil Mine (exploration)



MINING PROJECTS

LITHIUM



Ministerio de Minería
Catamarca Gobierno

CatamarcaMinera®

PRODUCTION

Fenix

Tres Quebradas

CONSTRUCTION

Sal de Oro

Sal de Vida

Hombre Muerto Oeste

FEASIBILITY

Kachi

EXPLORATION

Hombre Muerto Sur I

Hombre Muerto Oeste (Lithos)

Cortaderas

Hombre Muerto Norte

Campo Blanco

Hombre Muerto Este

Kachi

Laguna Caro

Rio Grande Sur

Tres Cruces

Minas Sinceras I, II y III

Laguna Amarga

Laguna Verde I, II y III

Salar de Antofalla

Noroeste de Antofalla (área II)

Proyecto Sinceras

Trila-LEA

Antofalla Norte

Minas Amelia

Proyecto Antofalla

Incahuasi

Antofallita XX

Archibarca

Mina Beatriz

Candela

Carachi

Carachi Blanco

Aguas Calientes

Fiambalá Norte

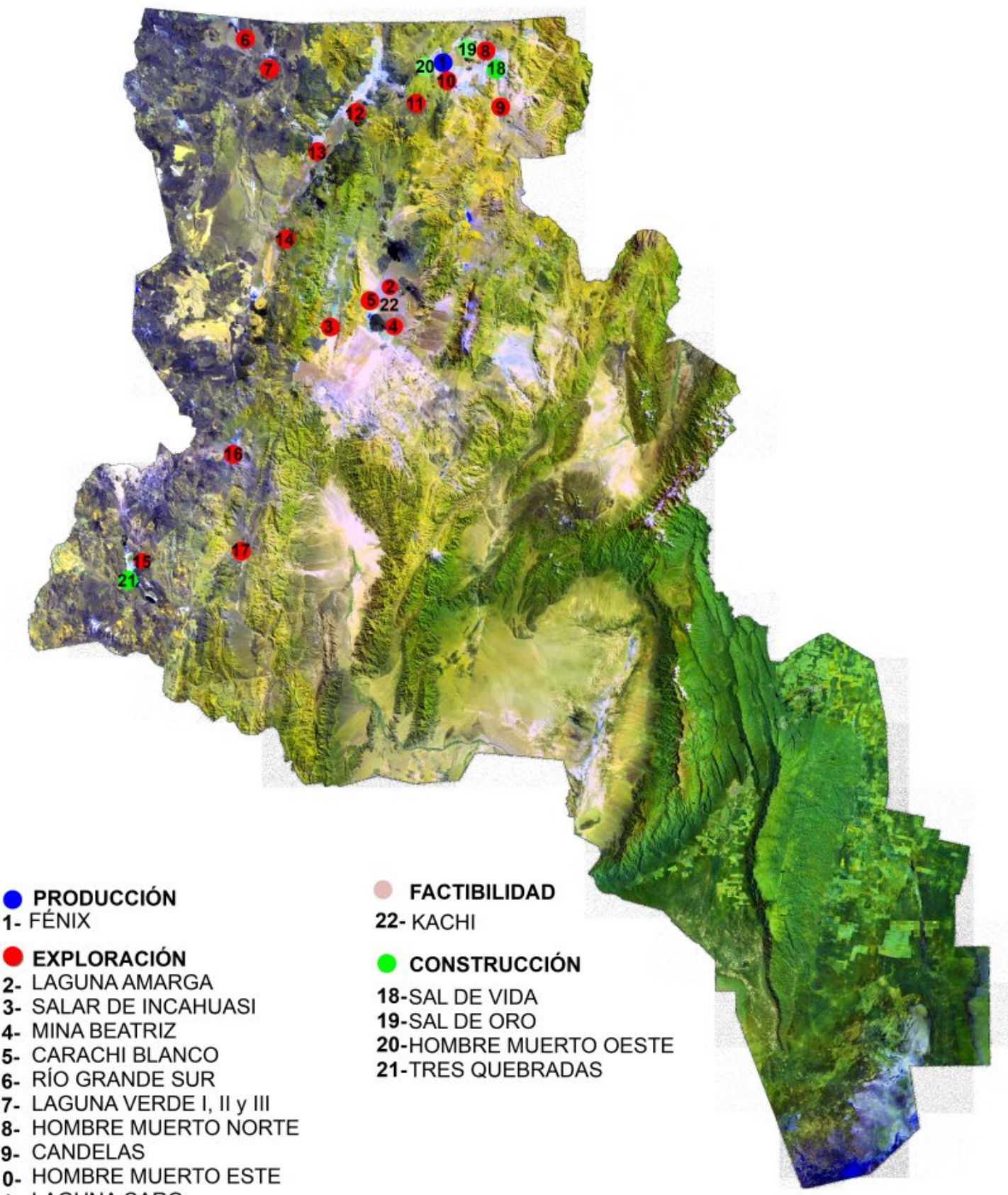
Jasi

Praderas

El Alto exploración

San Jorge

**PRINCIPAL ACTIVIDAD MINERA
PROYECTOS DE LITIO DE CATAMARCA**



- PRODUCCIÓN**
1- FÉNIX
- EXPLORACIÓN**
2- LAGUNA AMARGA
3- SALAR DE INCAHUASI
4- MINA BEATRIZ
5- CARACHI BLANCO
6- RÍO GRANDE SUR
7- LAGUNA VERDE I, II y III
8- HOMBRE MUERTO NORTE
9- CANDELAS
10- HOMBRE MUERTO ESTE
11- LAGUNA CARO
12- ANTOFALLA NORTE
13- SALAR DE ANTOFALLA
14- SINCERA
15- TRES CRUCES
16- SAN JORGE
17- FIAMBALÁ NORTE
- FACTIBILIDAD**
22- KACHI
- CONSTRUCCIÓN**
18- SAL DE VIDA
19- SAL DE ORO
20- HOMBRE MUERTO OESTE
21- TRES QUEBRADAS



Ministerio de Minería
Catamarca Gobierno

Catamarca Minera

Fénix Project

- Concessionaire/operator: Minera del Altiplano S.A.
- Río Tinto,
- Mineral: Lithium
- Stage: exploitation and expansion.
- Annual tonnes approved: 38,000.
- Origin of capital: Great Britain.



Sal de Vida Project

- Dealer/operator: Galaxy Lithium (Sal de Vida) S.A. – Río Tinto
- Mineral: Lithium.
- Stage: exploitation – construction of the extraction system and conduction of brine. Evaporation pools, camp and auxiliary works.
- Annual tonnes approved: 15,000
- Origin of capital: Australia.



Ministerio de Minería
Catamarca Gobierno

CatamarcaMinera®

Tres Quebradas Project

- Dealer/operator: Liex S.A.- Zijin
- Mineral: Lithium
- Stage: exploitation – construction of camp, evaporation pools, Fiambalá processing plant.
- Annual tonnes approved: 40,000
- Origin of capital: China.



Sal de Oro Project

- Concessionaire/operator: Posco Argentina SAU
- Mineral: Lithium.
- Stage: operation – construction of system. of brine extraction and conduction. Evaporation pools. Process plant, camp.
- Annual tonnes approved: 25,000
- Origin of capital: Korea



Ministerio de Minería
Catamarca Gobierno

CatamarcaMinera®

Hombre Muerto Oeste Project

- Concessionaire/operator: Galán Litio S.A.
- Mineral: Lithium
- Stage: exploitation –construction of brine extraction wells, pre-concentration ponds, liming plant, post-liming ponds, conditioning of the area for the collection of discarded salts, water supply infrastructure, others.
- Annual tonnes approved: 20,000
- Origin of capital: Australia.



Ministerio de Minería
Catamarca Gobierno

Catamarca **Minera**[®]

MINING PROJECTS

METALLIFEROUS

NON-METALLIFEROUS



Ministerio de Minería
Catamarca Gobierno

CatamarcaMinera®

PRINCIPAL ACTIVIDAD MINERA METALÍFERA Y NO METALÍFERA DE CATAMARCA

PRODUCTION

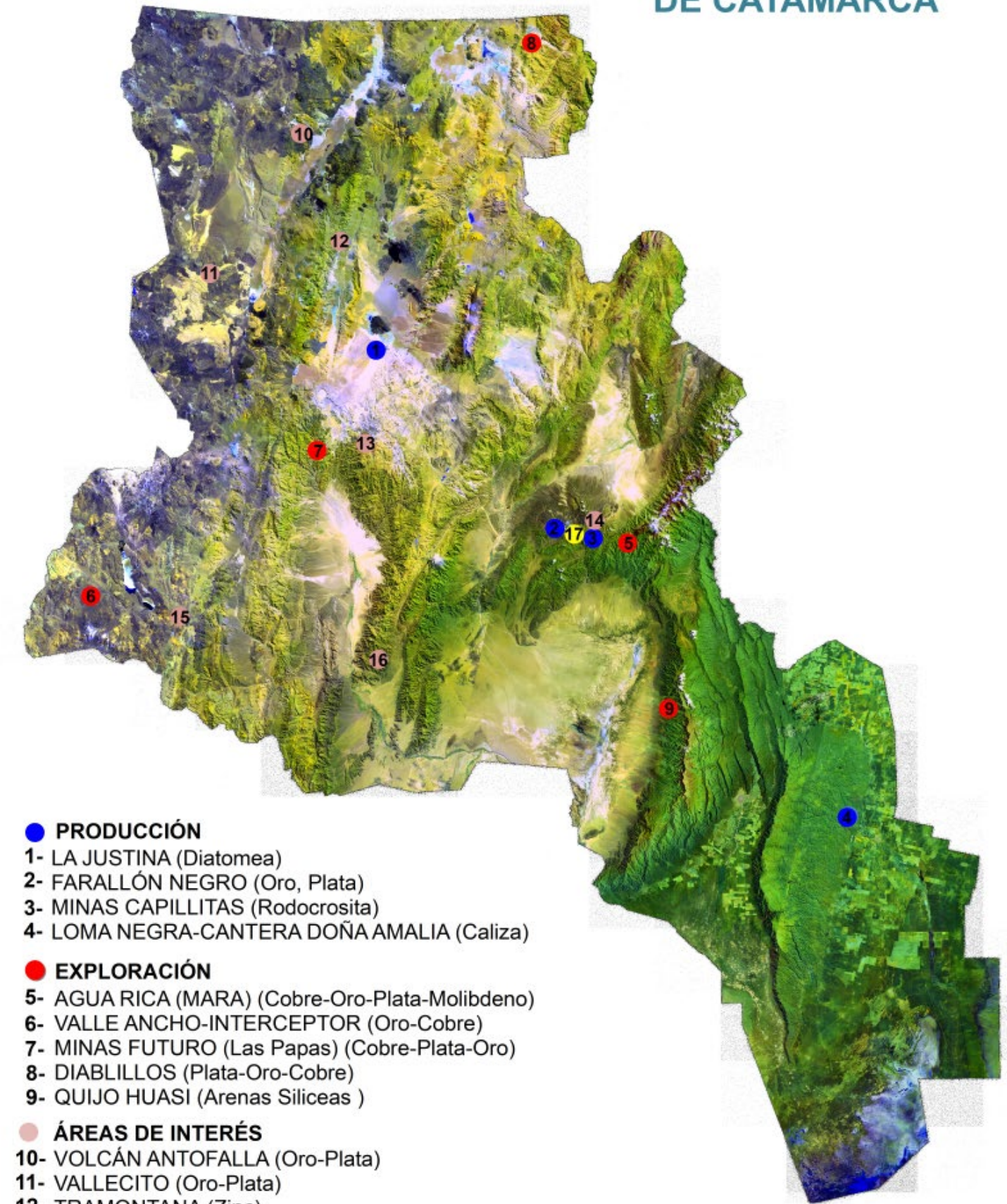
- LA JUSTINA (Diatomea)
- FARALLÓN NEGRO (Gold, Silver)
- MINAS CAPILLITAS (Rhodochrosite)
- LOMA NEGRA QUARRY DOÑA AMALIA (Limestone)

EXPLORATION

- AGUA RICA (MARA) (Copper-Gold-Silver-Molybdenum)
- VALLE ANCHO-INTERCEPTOR (Gold-Copper)
- MINAS FUTURO (Las Papas) (Copper-Silver-Gold)
- DIABLILLOS (Silver-Gold-Copper)
- QUIJO HUASI (Siliceous Sands)

AREAS OF INTEREST

- ANTOFALLA VOLCANO (Gold-Silver)
- VALLECITO (Gold-Silver)
- TRAMONTANA (Zinc)
- VERNANCUA (Gold-Silver)
- CERRO ATAJO (Copper-Gold)
- FILO DE LAS VICUÑAS (Gold-Silver)
- VIL ACHAY (Tin-Copper)



● PRODUCCIÓN

- 1- LA JUSTINA (Diatomea)
- 2- FARALLÓN NEGRO (Oro, Plata)
- 3- MINAS CAPILLITAS (Rodocrosita)
- 4- LOMA NEGRA-CANTERA DOÑA AMALIA (Caliza)

● EXPLORACIÓN

- 5- AGUA RICA (MARA) (Cobre-Oro-Plata-Molibdeno)
- 6- VALLE ANCHO-INTERCEPTOR (Oro-Cobre)
- 7- MINAS FUTURO (Las Papas) (Cobre-Plata-Oro)
- 8- DIABLILLOS (Plata-Oro-Cobre)
- 9- QUIJO HUASI (Arenas Siliceas)

● ÁREAS DE INTERÉS

- 10- VOLCÁN ANTOFALLA (Oro-Plata)
- 11- VALLECITO (Oro-Plata)
- 12- TRAMONTANA (Zinc)
- 13- VERNANCUA (Oro-Plata)
- 14- CERRO ATAJO (Cobre-Oro)
- 15- FILO DE LAS VICUÑAS (Oro-Plata)
- 16- VIL ACHAY (Esaño-Cobre)

● CIERRE DE MINA

- 17-BAJO DE LA ALUMBRERA (Cobre-Oro-Molibdeno)



Diablillos Project

- Dealer/Operator: MINA CERRO BAYO S.A. Y PACIFIC RIM MINING CORPORATION ARGENTINA S.A - AbraSilver
- Mineral: Silver - Gold
- Stage: Advanced exploration.
- July 2025 Mineral Resource Estimate: 199 million ounces of contained silver and 1.7 million ounces of contained gold (350 Moz AgEq) in M&I.
- Origin of capital: Canada.



Agua Rica Project

- Concessionaire/operator: Agua Rica L.L.C.
- Mineral: copper-gold-molybdenum-silver
- Stage: Advanced exploration.
- Origin of capital: Swiss.



Ministerio de Minería
Catamarca Gobierno

CatamarcaMinera®

Alumbrera Project

- Concessionaire/operator: Minera Alumbrera Ltd.
- Mineral: copper-gold-molybdenum
- Stage: reactivation - explotation



Ministerio de Minería
Catamarca Gobierno

Catamarca **Minera**[®]

MINING

LEGISLATION



Ministerio de Minería
Catamarca Gobierno

CatamarcaMinera®

Argentina's mining framework



Title

- It belongs to the discoverer. You must make a request to the Province.
- Free entry system. All types of minerals can be requested, by concession | Permit (no restricted minerals).



Tenure

- Simple to maintain: annual payment and investment plan executed (within 5 years of the title).
- Granted in perpetuity, provided that there is a continuous mining activity by the owner.



Permissions

- Unified, clear and timely environmental approval processes.
- Environmental and construction permits granted and controlled by the Province.



Transparency of the extractive industries

- Due to its commitment to transparency, the Province adhered to the international EITI standard.
- In October 2022, a detailed analysis was carried out in two provinces, including meetings with provincial officials and technical teams to deepen the progress made with respect to transparency policies. Information from the 2020-2021 period was collected and presented at the Regional Workshop on experiences of EITI implementation at the subnational level and use of mining revenues in the countries of the Andean region.
- On March 2, 2023, the Letter of Commitment was signed by the head of the Ministry and on July 7, 2023 it was signed by the governor of the province.
- Catamarca participated in the Fourth EITI Report Argentina, in evaluation.



Ministerio de Minería
Catamarca Gobierno

CatamarcaMinera®

MINING

SUSTAINABLE



SOCIAL

- Hiring local labor (70%)
- Mining Supplier Development



ECONOMIC

Mining trusts to improve the quality of life and strengthen the development of communities in the area of direct and indirect influence of mining ventures



ENVIRONMENTAL

Application of ESG criteria

ENVIRONMENTAL MINING POLICY

Environmental Monitoring and Management

- ✓ In charge of the Provincial Directorate of Mining Environmental Management (of the Ministry of Mining) and the Secretariat of Water.
- ✓ IRAM ISO 9001:2015 certification in quality management since 2011 (last recertification: August 2026)
- ✓ They generate their own data and allow them to compare information presented by mining concessionaires

Environmental Impact Assessment (EIA/IIA)

- ✗ Preventive procedure to adapt processes and infrastructure while protecting the environment
- ✗ Implementation of waste management programs
- ✗ Water, air and soil quality monitoring
- ✗ Regulations for the closure of projects and citizen consultation and participation



CITIZEN PARTICIPATION

Water monitoring

- Strengthening local communities

Participation in IIA approval

- Participatory informative technical talks
- Inter-institutional and community oversight
- Community environmental monitoring
- Public Hearings



THANK YOU
SO MUCH

